



全球信赖品质
World Trusted Quality



机电设备安装工程专业承包壹级资质
The First-grade Certification of Electromechanical Equipment Installation
ISO9001质量管理体系认证
Certified by ISO9001 quality system
ISO14001环境管理体系认证
Certified by ISO14001 environment system
首批荣获国家质检总局颁发全国工业产品生产许可证
First got the refrigeration equipment
production permit issued by National Quality Testing Bureau

AIR CONDITIONING TERMINALS

空调末端系列

B2-1

KD(X)series of ceiling air-handling units

吊顶式空调机组KD(X)系列



www.yatai.cc



以前我们认识世界，现在世界认识我们
We knew the world before,the world knows us now.

以人为本 / 品质 / 创新 / 服务

Dezhou Yatai Air Conditioning Equipment Co.,Ltd
Dezhou Yatai Glass Fiber Reinforced Plastic Equipment Co.,Ltd
Dezhou Yatai Environmental Protection Facilities Engineering Co.,Ltd
Dezhou Yajia Refrigeration Air Conditioning Project Co.,Ltd

Dezhou YATAI Group CHINA

Dezhou YATAI Group CHINA
Dezhou YATAI Group CHINA



Dezhou YATAI Group CHINA

Dezhou YATAI Group CHINA

Dezhou YATAI Group China
Dezhou YATAI Group CHINA

中国德州亚太集团

DEZHOU YATAI GROUP

CHINA

Dezhou YATAI Group CHINA
Dezhou YATAI Group CHINA

I Group CHINA
YATAI Group CHINA

亚太的品牌理念

全力推动创新科技的应用

致力于人类生活品质的提升、让科技引领生活

创世界满意品牌

THE CONCEPT OF YATAI BRAND

Promotes,with full strength,the application of innovative technology.Strives for the extension of living quality for human being,let the science and technology lead the new life and creates world satisfactory brand.

全球信赖品质

World Trusted Quality



德州亚太集团是国内大型中央空调制冷系统集成供应商。

集多年潜心研究，博采众长自成体系，打造出一流的中央空调全套设备和众多精品工程。国内以中央电视台新址、酒泉卫星发射中心、国家质检总局、三峡工程及近二十个北京奥运场馆等为代表，国外以巴基斯坦乌奇电厂、柬埔寨金边市大都会广场、印度帕帕多拉工程为代表的重点项目，采用了亚太中央空调设备，长期稳定，节能环保，获得了广泛的赞誉。

ISO9001、14001、3C、UL、CE、CRAA 等一系列认证；主机列入节能产品政府采购清单、数十项国家专利、国家级高新技术企业、中国驰名商标，充分标明了亚太集团的管理水平和产品水平。

与荷兰阿波罗合资，以欧洲标准制造的洁净设备全部返销发达国家、中央空调设备相继进入十几个国家和地区，展示亚太集团已经步出国门，与国际接轨。

植根齐鲁大地，秉持“以人为本”的经营理念，崇尚“以德待人”的儒家文化，亚太集团愿与您共同开创明天的辉煌。

Dezhou Yatai Group is a supplier of large central air conditioning and refrigeration system in China.

Yatai has developed whole set of advanced central air conditioner and lots of wonderful projects based on long-term research and features of the others. Many famous projects adopted Yatai central air conditioners that run smoothly, save energy, protect environment and won good reputation widely like the New CCTV, the Jiuquan Satellite Launching Center, the General Bureau of National Quality Inspection, Three-gorge Engineering Project, over 20 Beijing Olympic Stadiums and others in China; the UCH Power Plant in Pakistan, the Phnom Penh Capital Squire in Cambodia, the Priyadarshini Jurala Project in India and others across the world.

Yatai has certified by ISO9001, 14001, 3C, UL, CE, CRAA and others; its chiller names have been put on the government purchasing list as energy saving products and obtained dozens of national patents, National High-technology Enterprise and Chinese Famous Trademark, which show the managements and product qualities of Yatai Group.

The filtering equipment made by the joint venture, co-invested with Dutch Afro Company, according to the European Standards air exported fully to the developed countries; the central air conditioners have exported to over 10 countries or regions, which show that Yatai Group has stepped into oversea market and been in the line with the international.

Located at Shandong Province, insisting on business idea of "humanism" and advocating the Confucianism of "getting along with people by morality" Yatai Group wishes to create a brilliant future with you.



中国德州亚太集团
CHINA DEZHOU YATAI GROUP



以一流技术研制全方位产品

Developing the omni-directional products by the first-class technology

使用精品 造就精品

世界著名制造商生产的最现代化装备和领先同行业的高科技含量是亚太始终保持竞争优势的强力保证

Using high-quality goods Making high-quality goods

The modernized equipment produced by world famous manufacturers And the high content leading in the same profession

Are Yatai's guarantee of maintaining his competitive advantage all the time

全球信赖品质

World Trusted Quality



机电设备安装工程专业承包壹级资质
the First-grade Certification of Electromechanical Equipment Installation
ISO9001质量管理体系认证
Certified by ISO9001 quality system
ISO14001环境管理体系认证
Certified by ISO14001 environment system
首批荣获国家质检总局颁发全国工业产品生产许可证
First got the refrigeration equipment
production permit issued by National Quality Testing Bureau

Honorable Qualification



AIR CONDITIONING TERMINALS 空调末端系列

KD(X)series of ceiling air-handling units

吊顶式空调机组KD(X)系列

[illegible]



组合式空调机组
Combination air-handling units



吊顶式空调机组KD(X)系列
KD(X) series of ceiling air-handling units



KDS(X) 系列吊顶射流空调机组
KDS (X) Series Of Suspended Ceiling Jet Type Air Handling Unit



风机盘管机组
Fan-coils

KD(X)series of ceiling air-handling units

吊顶式空调机组KD(X)系列

AIR CONDITIONING
TERMINALS
空调末端系列

产品简介
summary





特点及适应范围

Characteristics and range of application

亚太KD(X) 吊顶式空调机组具有送风、冷却、加热、加湿、空气净化等多种空气处理功能，能满足不同使用条件及各种安装方式的要求，同时我公司也可按用户要求进行各种优化设计，可提供变风量吊顶式空调机组，软启特性、无级调速、全自动控制，高效节能。可广泛应用于高层建筑、宾馆、饭店、影剧院、商场、体育馆等场合。

Yatai KD(X) suspended ceiling air conditioning unit has functions of air supply, cooling, heating, humidification, and air purification, which can meet the requirements of different use conditions and various installation methods. At the same time, our company can also according to user's requirements to optimize the design and provide variable air volume type. It has advantages of soft start, stepless speed regulation, automatic control, high efficiency and energy conservation. This kind of air conditioning unit is widely used in high-rise buildings, hotels, restaurants, theaters, shopping malls, gyms and other occasions.

亚太现代化生产的特点

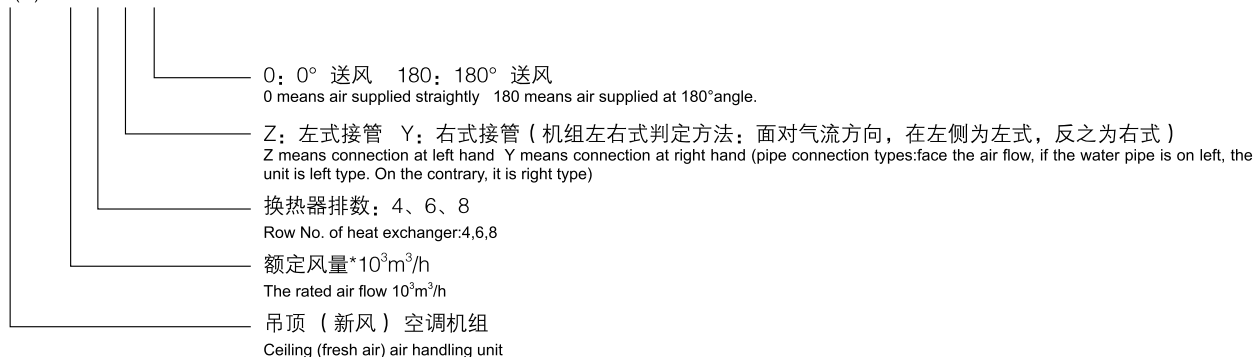
The features of Yatai air handling units

- | | |
|---------|-------------------------|
| ★ 高质量 | High quality |
| ★ 低成本 | Low costs |
| ★ 生产周期短 | short production cycles |

KD(X)系列吊顶式空调机组型号说明

Model explanation of KD(X) series of suspended ceiling air handling unit

例3: KD(X)-□□□□





KD(X)系列吊顶式空调机组主要技术参数

Key technical data of KD(X) series of suspended ceiling air handling unit

型号 Model	额定风量 m³/h Rated air flow	机外静压 Pa External static pressure Pa			型式 Type	风机 Fan		重量 kg Weight			整机噪声 dB(A) Unit noise dB(A)
		4排 4 Rows	6排 6 Rows	8排 8 Rows		功率 kW Power	台数 Sets	4排 4 Rows	6排 6 Rows	8排 8 Rows	
KD(X)-1.5	1500	260	200	146	直联外转子 或皮带传动离 心风机 Direct connecting external rotor or belt drive centrifugal fan	0.32	1	84	86	91	55
KD(X)-2	2000	258	198	145		0.55	1	86	90	96	58
KD(X)-2.5	2500	256	200	146		0.55	1	103	108	116	58
KD(X)-3	3000	246	192	136		0.75	1	105	112	120	59
KD(X)-4	4000	256	198	146		0.55 × 2	2	156	163	176	60
KD(X)-5	5000	246	200	150		0.55 × 2	2	169	175	184	62
KD(X)-6	6000	246	192	138		0.55 × 2	2	179	190	207	62
KD(X)-7	7000	267	230	178		0.8 × 2	2	185	201	243	63
KD(X)-8	8000	355	305	252		0.8 × 2	2	204	222	257	63
KD(X)-10	10000	406	355	308		1.5 × 2	2	245	267	308	66
KD(X)-12	12000	460	400	346		1.8 × 2	2	318	346	399	69
KD(X)-13.5	13500	468	408	350		2.2 × 2	2	359	398	452	72
KD(X)-15	15000	510	446	395		3.0 × 2	2	410	446	490	73

注:

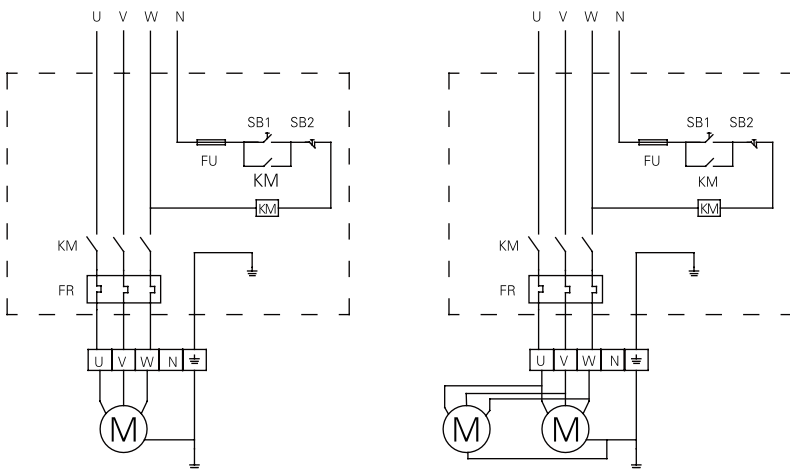
- 1、表中所列重量为机组本身净重，运行重量在此基础上加20%。
- 2、标准制冷工况：进风干球温度27℃，湿球温度19.5℃，进水温度7℃。
- 3、全新风制冷工况：进风干球温度35℃，湿球温度28℃，进水温度7℃。
- 4、标准制热工况：进风干球温度15℃，进水温度60℃。
- 5、全新风制热工况：进风干球温度7℃，进水温度60℃。
- 6、全新风工况35℃/28℃时，机外静压比标准工况27℃/19.5℃低25Pa。
- 7、表中机外静压仅供参考，实际制作时可根据用户要求设计。但机组功率及噪声有可能和表中数值不一致。
- 8、本系列机组可在30-50Hz之间变频控制使用。

Remarks :

- 1.The weights in this table are unit net ones, the running weights will increase 20% based on net ones.
- 2.The standard cooling working conditions: the dry bulb temp of entering air is 27℃, its wet bulb is 19.5℃. The entering water temp is 7℃.
- 3、All fresh air cooling working condition: the dry bulb temp of entering air is 35℃; Its wet bulb is 28℃. The entering water temp is 7℃.
- 4、The standard heating working condition: the dry bulb temp of entering air is 15℃. The entering water temp is 60℃.
- 5、All fresh air heating working condition: the dry bulb temp. of entering air is 7℃. The entering water temp. is 60℃.
- 6、The external static pressure of 35℃/28℃ total fresh air working condition is 25Pa lower than that of 27℃ / 19.5℃ standard working condition.
- 7、The external static pressure data in this table are for reference only. It can be designed according to user' s requirement. Actual powers and noises may be different from the values in this table.
- 8、This series units can be controlled within the frequency of 30-50Hz.

KD(X)系列吊顶式空调机组接线图

Wiring diagram of KD(X) of suspended ceiling air handling unit



FU-保险

KM-继电器

SB-开关

FU-Fuse

KM-Relay

SB-Switch

注:

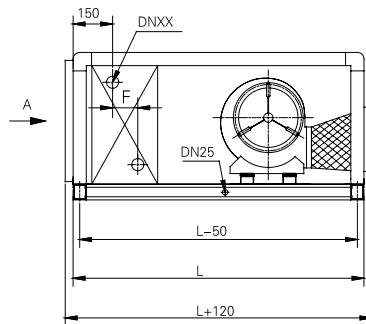
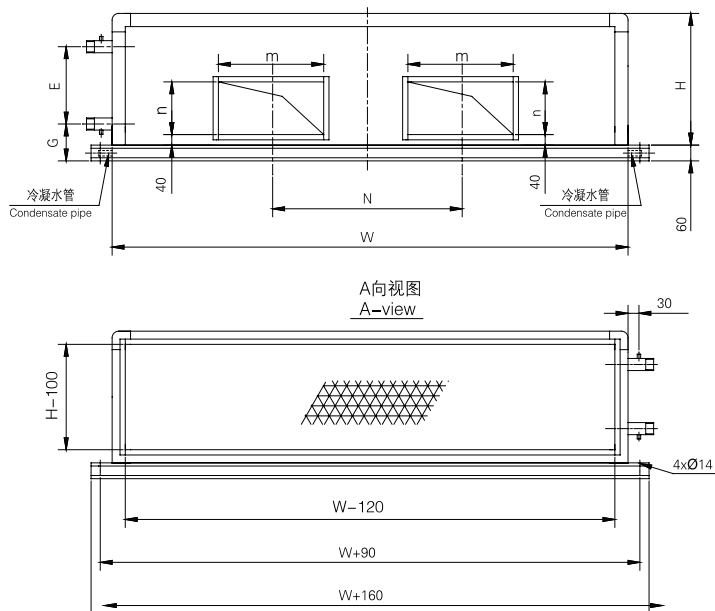
- 1、本系列机组只提供直接启动的接线端子。
- 2、以上接线图仅供参考，标准产品不含启动柜，若用户需要订货时请注明。虚线框内接线示意图根据实际情况酌定。
- 3、用户自接电控设备，应设过载、过热、缺相等保护。

Note:

- 1.This series unit is equipped with direct-starting terminals only.
- 2.The above wiring diagram is only for reference, the standard unit is not equipped with starting cabinet, if consumer needs, please let us know when placing order. The wiring shown in the dashed box can be done according to the actual situation.
- 3.Electronic control equipment shall be provided by consumer himself, and protection like overload, over-temperature, phase-lack and others shall be available.

KD(X)系列吊顶式空调机组外形尺寸

Outside sizes of KD(X) series of suspended ceiling air handling unit



注:

型号KD(X)-1.5~KD(X)-8机组单侧冷凝水排水管

型号KD(X)-10~KD(X)-15机组两侧均有冷凝水排水管

Note:

As for the KD(X)-1.5~KD(X)-8 model of unit, condensate discharge pipe is equipped on one side

As for the KD(X)-10~KD(X)-15 unit, condensate discharge pipe is equipped on both two sides.

型号 Model	KD(X)-1.5	KD(X)-2	KD(X)-2.5	KD(X)-3	KD(X)-4	KD(X)-5
L	1085	1085	1085	1085	1085	1085
W	700	840	980	1120	1400	1680
H	500	500	500	500	500	500
m × n	320 × 200	320 × 200	400 × 200	400 × 250	2-320 × 200	2-400 × 200
N					600	700
DNXX(in)	DN32(1 $\frac{1}{4}$)	DN32(1 $\frac{1}{4}$)	DN40(1 $\frac{1}{2}$)	DN40(1 $\frac{1}{2}$)	DN40(1 $\frac{1}{2}$)	DN40(1 $\frac{1}{2}$)
E	356	356	356	356	356	356
F	4排管: F=66, 6排管: F=110, 8排管: F=154 4 Rows: F=66, 6 Rows: F=110, 8 Rows: F=154					
G	120					

型号 Model	KD(X)-6	KD(X)-7	KD(X)-8	KD(X)-10	KD(X)-12	KD(X)-13.5	KD(X)-15
L	1085	1085	1085	1285	1285	1285	1285
W	1960	1960	1960	2080	2180	2280	2340
H	500	580	620	680	740	780	810
m × n	2-400 × 250	2-400 × 250	2-500 × 250	2-500 × 320	2-500 × 400	2-500 × 400	2-630 × 400
N	760	760	820	820	900	900	1000
D(in)	DN40(1 $\frac{1}{2}$)	DN40(1 $\frac{1}{2}$)	DN50 (2)	DN50 (2)	DN50 (2)	DN50 (2)	DN50 (2)
E	356	375	420	495	545	574	625
F	4排管: F=66, 6排管: F=110, 8排管: F=154 4 Rows: F=66, 6 Rows: F=110, 8 Rows: F=154						
G	120	130					



组合式空调机组
Combination air-handling units



吊顶式空调机组KD(X)系列
KD(X) series of ceiling air-handling units



KDS(X) 系列吊顶射流空调机组
KDS (X) Series Of Suspended Ceiling Jet Type Air Handling Unit



风机盘管机组
Fan-coils

吊顶式空调机组供冷能力表1

Cooling capacity table 1 of suspended air conditioning unit

型号 Model	风量 m³/h Air flow	管排数 Rows No.	进水温度 °C Water feed temps	进风温度 (干球温度/湿球温度) Air intake temps(dry bulb/wet bulb)															
				26°C/19°C				27°C/19.5°C				29°C/22°C				全新风35°C/28°C All fresh air 35°C/28°C			
				水流量 m³/h Water flow	水阻力 Kpa Water resistance	额定供冷量 kW Rated cooling capacity	显热冷量 kW Sensible heat cooling capacity	水流量 m³/h Water flow	水阻力 Kpa Water resistance	额定供冷量 kW Rated cooling capacity	显热冷量 kW Sensible heat cooling capacity	水流量 m³/h Water flow	水阻力 Kpa Water resistance	额定供冷量 kW Rated cooling capacity	显热冷量 kW Sensible heat cooling capacity	水流量 m³/h Water flow	水阻力 Kpa Water resistance	额定供冷量 kW Rated cooling capacity	显热冷量 kW Sensible heat cooling capacity
KD(X) -1.5	1500	4	5	1.3	3.6	7.8	6.2	1.5	4.4	11.1	6.9	2.5	9.6	14.7	11.3	3.2	14.1	18.9	7.8
			6	1.2	2.9	6.9	5.4	1.3	3.6	9.7	6.0	2.2	7.8	12.9	9.9	3.1	13.1	18.0	7.5
			7	1.0	2.3	5.9	4.7	1.2	2.8	8.4	5.2	1.9	6.2	11.1	8.6	2.9	12.1	17.1	7.3
			8	0.9	1.9	5.3	4.2	1.0	2.4	7.5	4.6	1.7	5.2	9.9	7.6	2.6	10.1	15.3	7.0
			9	0.8	1.6	4.6	3.7	0.9	1.9	6.5	4.0	1.5	4.2	8.7	6.7	2.3	8.2	13.3	6.7
		6	5	1.9	5.9	10.8	6.5	2.0	6.7	14.5	7.8	2.8	11.5	16.5	11.0	4.1	20.4	23.9	9.4
			6	1.7	5.1	9.8	5.9	1.8	5.7	13.1	7.1	2.6	9.8	15.0	10.0	3.9	18.9	22.8	9.1
			7	1.5	4.2	8.6	5.2	1.6	4.7	11.6	6.2	2.3	8.1	13.3	8.8	3.7	17.5	21.7	8.8
			8	1.3	3.5	7.7	4.7	1.4	4.0	10.3	5.6	2.0	6.8	11.8	7.9	3.6	16.3	20.7	8.4
			9	1.2	2.8	6.7	4.1	1.3	3.2	9.0	4.9	1.8	5.5	10.3	6.9	3.4	15.1	19.7	8.1
		8	5	2.4	8.6	13.7	8.3	2.5	9.6	18.5	9.1	3.5	15.7	20.2	11.5	4.8	25.6	27.7	10.8
			6	2.1	7.3	12.4	7.5	2.3	8.2	16.7	8.2	3.2	13.4	18.3	10.4	4.5	23.7	26.4	10.4
			7	1.9	6.1	11.0	6.7	2.0	6.8	14.8	7.3	2.8	11.1	16.2	9.2	4.3	22.0	25.2	10.1
			8	1.7	5.1	9.8	5.9	1.8	5.7	13.2	6.5	2.5	9.3	14.4	8.2	4.1	20.4	24.0	9.6
			9	1.5	4.1	8.6	5.2	1.6	4.6	11.5	5.7	2.2	7.5	12.6	7.2	3.9	18.9	22.8	9.2
KD(X) -2	2000	4	5	2.2	7.9	13.0	10.3	2.5	9.6	14.8	11.4	4.2	21.0	24.5	18.8	4.3	22.0	25.2	10.4
			6	2.0	6.4	11.4	9.0	2.2	7.9	13.0	10.0	3.7	17.2	21.4	16.5	4.1	20.4	24.0	10.0
			7	1.7	5.1	9.8	7.8	1.9	6.2	11.2	8.6	3.2	13.6	18.5	14.2	3.9	18.9	22.8	9.8
			8	1.5	4.3	8.7	6.9	1.7	5.2	9.9	7.7	2.8	11.4	16.5	12.7	3.5	15.8	20.3	9.3
			9	1.3	3.5	7.7	6.1	1.5	4.2	8.7	6.7	2.5	9.3	14.4	11.1	3.1	12.8	17.8	8.9
		6	5	3.1	12.9	17.8	10.8	3.3	14.6	19.3	12.9	4.7	25.0	27.3	18.2	5.5	31.8	31.9	12.6
			6	2.8	11.0	16.1	9.8	3.0	12.5	17.5	11.7	4.3	21.4	24.8	16.5	5.2	29.5	30.4	12.1
			7	2.5	9.1	14.3	8.7	2.7	10.3	15.5	10.3	3.8	17.7	21.9	14.6	5.0	27.3	29.0	11.8
			8	2.2	7.6	12.7	7.7	2.4	8.6	13.8	9.2	3.4	14.8	19.5	13.0	4.7	25.4	27.6	11.2
			9	1.9	6.2	11.1	6.7	2.1	7.0	12.1	8.0	2.9	12.0	17.1	11.4	4.5	23.5	26.3	10.7
		8	5	3.9	19.0	22.9	13.9	4.2	21.3	24.6	15.2	5.8	34.8	33.8	19.2	6.4	39.9	37.0	14.4
			6	3.6	16.3	20.8	12.6	3.8	18.2	22.3	13.8	5.3	29.9	30.7	17.4	6.1	37.0	35.2	13.8
			7	3.2	13.5	18.4	11.1	3.4	15.1	19.7	12.2	4.7	24.7	27.1	15.4	5.8	34.3	33.5	13.5
			8	2.8	11.3	16.4	9.9	3.0	12.6	17.6	10.8	4.2	20.6	24.1	13.7	5.5	31.9	32.0	12.8
			9	2.5	9.2	14.3	8.7	2.6	10.2	15.4	9.5	3.6	16.8	21.1	12.0	5.2	29.5	30.4	12.3

注：进水温度7°C，进出水温差5°C。

Note: The water feed temp is 7°C, the temp difference between feeding and leaving is 5°C.

吊顶式空调机组供冷能力表2

Cooling capacity table 2 of suspended air conditioning unit

型号 Model	风量 m³/h Air flow	管排数 Rows No.	进水温度 ℃ Water feed temps	进风温度 (干球温度/湿球温度) Air intake temps(dry bulb/wet bulb)															
				26℃/19℃				27℃/19.5℃				29℃/22℃				全新风35℃/28℃ All fresh air 35℃/28℃			
				水流量 m³/h Water flow	水阻力 Kpa Water resistance	额定供冷量 kW Rated cooling capacity	显热冷量 kW Sensible heat cooling capacity	水流量 m³/h Water flow	水阻力 Kpa Water resistance	额定供冷量 kW Rated cooling capacity	显热冷量 kW Sensible heat cooling capacity	水流量 m³/h Water flow	水阻力 Kpa Water resistance	额定供冷量 kW Rated cooling capacity	显热冷量 kW Sensible heat cooling capacity	水流量 m³/h Water flow	水阻力 Kpa Water resistance	额定供冷量 kW Rated cooling capacity	显热冷量 kW Sensible heat cooling capacity
KD(X) -2.5	2500	4	5	2.8	3.2	16.2	12.8	3.2	3.9	18.4	14.2	5.2	8.4	30.5	23.4	6.4	11.5	37.2	15.4
			6	2.4	2.6	14.2	11.2	2.8	3.1	16.2	12.4	4.6	6.9	26.7	20.6	6.1	10.6	35.4	14.8
			7	2.1	2.0	12.2	9.7	2.4	2.5	13.9	10.7	4.0	5.4	23.0	17.7	5.8	9.9	33.8	14.4
			8	1.9	1.7	10.9	8.6	2.1	2.1	12.4	9.5	3.5	4.5	20.5	15.8	5.2	8.2	30.0	13.7
			9	1.6	1.4	9.5	7.5	1.9	1.7	10.8	8.3	3.1	3.7	17.9	13.8	4.5	6.7	26.3	13.2
		6	5	3.8	5.0	21.9	13.3	4.1	5.7	23.7	15.8	5.8	9.8	33.6	22.4	7.8	15.4	45.1	17.8
			6	3.4	4.3	19.8	12.0	3.7	4.9	21.5	14.3	5.2	8.4	30.4	20.3	7.4	14.3	42.9	17.1
			7	3.0	3.6	17.5	10.6	3.3	4.0	19.0	12.7	4.6	6.9	26.9	17.9	7.0	13.3	40.9	16.6
			8	2.7	3.0	15.6	9.5	2.9	3.4	16.9	11.3	4.1	5.8	23.9	16.0	6.7	12.3	39.0	15.8
			9	2.3	2.4	13.7	8.3	2.5	2.7	14.8	9.9	3.6	4.7	20.9	14.0	6.4	11.4	37.1	15.2
		8	5	4.9	7.6	28.5	17.3	5.3	8.5	30.6	18.9	7.2	13.9	42.1	23.9	9.1	19.7	52.7	20.5
			6	4.4	6.5	25.8	15.7	4.8	7.3	27.8	17.1	6.6	11.9	38.1	21.7	8.6	18.2	50.2	19.7
			7	3.9	5.4	22.9	13.9	4.2	6.0	24.6	15.2	5.8	9.9	33.7	19.2	8.2	16.9	47.8	19.2
			8	3.5	4.5	20.4	12.3	3.8	5.0	21.9	13.5	5.2	8.2	30.0	17.1	7.8	15.7	45.6	18.2
			9	3.1	3.7	17.8	10.8	3.3	4.1	19.1	11.8	4.5	6.7	26.3	14.9	7.5	14.5	43.4	17.5
KD(X) -3	3000	4	5	3.4	4.2	19.5	15.4	3.8	5.1	22.2	17.1	6.3	11.2	36.7	28.2	7.7	15.3	44.7	18.5
			6	2.9	3.4	17.1	13.5	3.3	4.2	19.5	15.0	5.5	9.2	32.2	24.7	7.3	14.1	42.6	17.8
			7	2.5	2.7	14.7	11.7	2.9	3.3	16.8	12.9	4.8	7.3	27.7	21.3	7.0	13.1	40.6	17.3
			8	2.3	2.3	13.1	10.4	2.6	2.8	14.9	11.5	4.2	6.1	24.7	19.0	6.2	10.9	36.1	16.5
			9	2.0	1.9	11.5	9.1	2.2	2.3	13.1	10.0	3.7	4.9	21.6	16.6	5.4	8.9	31.6	15.8
		6	5	4.6	6.9	26.7	16.2	5.0	7.8	29.0	19.3	7.1	13.3	41.0	27.3	9.3	20.5	54.1	21.3
			6	4.2	5.9	24.2	14.7	4.5	6.7	26.2	17.5	6.4	11.4	37.1	24.8	8.9	19.0	51.5	20.5
			7	3.7	4.9	21.4	13.0	4.0	5.5	23.2	15.5	5.7	9.5	32.9	21.9	8.4	17.6	49.0	20.0
			8	3.3	4.1	19.1	11.6	3.6	4.6	20.7	13.8	5.0	7.9	29.3	19.5	8.0	16.3	46.8	19.0
			9	2.9	3.3	16.7	10.1	3.1	3.7	18.1	12.1	4.4	6.4	25.6	17.1	7.7	15.1	44.5	18.2
		8	5	5.9	10.3	34.4	20.8	6.4	11.3	36.9	22.8	8.7	18.6	50.8	28.8	10.9	26.0	63.1	24.5
			6	5.4	8.7	31.2	18.9	5.8	9.7	33.5	20.7	7.9	15.9	46.0	26.1	10.3	24.1	60.1	23.6
			7	4.7	7.2	27.6	16.7	5.1	8.0	29.6	18.3	7.0	13.2	40.7	23.1	9.8	22.4	57.2	23.0
			8	4.2	6.0	24.5	14.9	4.5	6.7	26.4	16.3	6.2	11.0	36.2	20.6	9.4	20.8	54.6	21.8
			9	3.7	4.9	21.5	13.0	4.0	5.5	23.1	14.2	5.4	8.9	31.7	18.0	8.9	19.2	51.9	21.0

注：进水温度7℃，进出水温差5℃。

Note: The water feed temp is 7℃, the temp difference between feeding and leaving is 5℃.



组合式空调机组
Combination air-handling units



吊顶式空调机组KD(X)系列
KD(X) series of ceiling air-handling units



KDS(X) 系列吊顶射流空调机组
KDS (X) Series Of Suspended Ceiling Jet Type Air Handling Unit



风机盘管机组
Fan-coils

吊顶式空调机组供冷能力表3

Cooling capacity table 3 of suspended air conditioning unit

型号 Model	风量 m³/h Air flow	管排数 Rows No.	进水温度 ℃ Water feed temps	进风温度 (干球温度/湿球温度) Air intake temps(dry bulb/wet bulb)															
				26℃/19℃				27℃/19.5℃				29℃/22℃				全新风35℃/28℃ All fresh air 35℃/28℃			
				水流量 m³/h Water flow	水阻力 Kpa Water resistance	额定供 冷量 kW Rated cooling capacity	显热冷 量 kW Sensible heat cooling capacity	水流量 m³/h Water flow	水阻力 Kpa Water resistance	额定供 冷量 kW Rated cooling capacity	显热冷 量 kW Sensible heat cooling capacity	水流量 m³/h Water flow	水阻力 Kpa Water resistance	额定供 冷量 kW Rated cooling capacity	显热冷 量 kW Sensible heat cooling capacity	水流量 m³/h Water flow	水阻力 Kpa Water resistance	额定供 冷量 kW Rated cooling capacity	显热冷 量 kW Sensible heat cooling capacity
KD(X) -4	4000	4	5	4.5	6.5	25.9	20.5	5.1	8.0	29.5	22.7	8.4	17.4	48.7	37.5	9.9	22.5	57.5	23.8
			6	3.9	5.3	22.7	18.0	4.4	6.5	25.8	19.9	7.4	14.2	42.7	32.9	9.4	20.9	54.8	22.9
			7	3.4	4.2	19.6	15.5	3.8	5.2	22.3	17.1	6.3	11.3	36.8	28.3	9.0	19.4	52.2	22.3
			8	3.0	3.5	17.4	13.8	3.4	4.3	19.8	15.3	5.6	9.4	32.8	25.2	8.0	16.2	46.5	21.2
			9	2.6	2.9	15.3	12.1	3.0	3.5	17.3	13.3	4.9	7.7	28.7	22.1	7.0	13.2	40.6	20.3
		6	5	6.0	10.4	35.0	21.2	6.5	11.8	37.9	25.3	9.2	20.3	53.7	35.8	12.3	31.6	71.5	28.2
			6	5.5	8.9	31.7	19.2	5.9	10.1	34.3	22.9	8.4	17.4	48.6	32.4	11.7	29.3	68.1	27.1
			7	4.8	7.4	28.1	17.0	5.2	8.4	30.4	20.3	7.4	14.4	43.0	28.7	11.2	27.1	64.9	26.4
			8	4.3	6.2	25.0	15.1	4.7	7.0	27.1	18.0	6.6	12.0	38.3	25.5	10.6	25.2	61.9	25.1
			9	3.8	5.0	21.8	13.2	4.1	5.7	23.7	15.8	5.8	9.8	33.5	22.3	10.1	23.4	58.9	24.1
		8	5	7.8	15.7	15.6	27.7	8.4	17.6	49.0	30.3	11.6	28.8	67.4	38.3	16.1	48.1	93.8	36.4
			6	7.1	13.5	41.3	25.1	7.6	15.1	44.4	27.4	10.5	24.7	61.0	34.7	15.4	44.6	89.3	35.1
			7	6.3	11.2	36.6	22.2	6.8	12.5	39.3	24.3	9.3	20.4	54.0	30.7	14.6	41.3	85.1	34.2
			8	5.6	9.3	32.6	19.7	6.0	10.4	35.0	21.6	8.3	17.0	48.1	27.3	14.0	38.4	81.1	32.5
			9	4.9	7.6	28.5	17.3	5.3	8.5	30.6	18.9	7.2	13.9	42.0	23.9	13.3	35.6	77.2	31.2
KD(X) -5	5000	4	5	5.6	9.3	32.5	25.7	6.4	11.3	37.0	27.4	10.5	24.8	61.1	47.0	12.5	32.2	72.4	29.9
			6	4.9	7.6	28.5	22.6	5.6	9.3	32.4	24.9	9.2	20.2	53.6	41.2	11.9	29.9	69.0	28.8
			7	4.2	6.0	24.6	19.5	4.8	7.4	27.9	21.5	7.9	16.1	46.2	35.6	11.3	27.7	65.7	28.1
			8	3.8	5.0	21.9	17.3	4.3	6.1	24.9	19.1	7.1	13.4	41.1	31.6	10.1	23.1	58.5	26.7
			9	3.3	4.1	19.1	15.1	3.7	5.0	21.8	16.7	6.2	10.9	36.0	27.7	8.8	18.8	51.2	25.6
		6	5	7.7	15.2	44.5	27.0	8.3	17.2	48.3	32.2	11.8	29.4	68.3	45.6	15.4	44.8	89.6	35.3
			6	6.9	13.0	40.3	24.5	7.5	14.7	43.7	29.1	10.6	25.2	61.9	41.3	14.7	41.6	85.4	34.0
			7	6.1	10.8	35.7	21.6	6.7	12.2	38.7	25.8	9.4	20.9	54.8	36.5	14.0	38.5	81.3	33.1
			8	5.5	9.0	31.8	19.3	5.9	10.2	34.4	23.0	8.4	17.4	48.8	32.5	13.3	35.8	77.5	31.4
			9	4.8	7.3	27.8	16.9	5.2	8.3	30.1	20.1	7.3	14.2	42.7	28.4	12.7	33.1	73.8	30.2
		8	5	9.9	22.4	57.3	34.7	10.6	25.0	61.6	38.0	14.5	41.0	84.6	48.1	19.9	66.8	115.9	45.0
			6	8.9	19.2	51.9	31.5	9.6	21.5	55.8	34.4	13.2	35.2	76.6	43.5	19.0	62.0	110.4	43.4
			7	7.9	15.9	46.0	27.9	8.5	17.8	49.4	30.5	11.7	29.1	67.8	38.5	18.1	57.4	105.2	42.2
			8	7.0	13.3	40.9	24.8	7.6	14.8	43.9	27.1	10.4	24.3	60.4	34.3	17.2	53.4	100.3	40.1
			9	6.2	10.8	35.8	21.7	6.6	12.1	38.4	23.7	9.1	19.7	52.8	30.0	16.4	49.4	95.4	38.5

注：进水温度7℃，进出水温差5℃。

Note: The water feed temp is 7℃, the temp difference between feeding and leaving is 5℃.

吊顶式空调机组供冷能力表4

Cooling capacity table 4 of suspended air conditioning unit

型号 Model	风量 m³/h Air flow	管排数 Rows No.	进水温度 ℃ Water feed temps	进风温度 (干球温度/湿球温度) Air intake temps(dry bulb/wet bulb)															
				26℃/19℃				27℃/19.5℃				29℃/22℃				全新风35℃/28℃ All fresh air 35℃/28℃			
				水流量 m³/h Water flow	水阻力 Kpa Water resistance	额定供冷量 kW Rated cooling capacity	显热冷量 kW Sensible heat cooling capacity	水流量 m³/h Water flow	水阻力 Kpa Water resistance	额定供冷量 kW Rated cooling capacity	显热冷量 kW Sensible heat cooling capacity	水流量 m³/h Water flow	水阻力 Kpa Water resistance	额定供冷量 kW Rated cooling capacity	显热冷量 kW Sensible heat cooling capacity	水流量 m³/h Water flow	水阻力 Kpa Water resistance	额定供冷量 kW Rated cooling capacity	显热冷量 kW Sensible heat cooling capacity
KD(X) -6	6000	4	5	6.7	12.3	38.8	30.8	7.6	15.0	44.2	34.0	12.6	32.7	73.1	56.2	13.0	34.4	75.6	31.2
			6	5.9	10.0	24.1	27.0	6.7	12.2	38.8	29.8	11.0	26.7	64.1	49.3	12.4	31.9	72.0	30.1
			7	5.0	7.9	29.4	23.3	5.8	9.7	33.4	25.7	9.5	21.2	55.3	42.5	11.8	29.6	68.5	29.3
			8	4.5	6.6	26.1	20.7	5.1	8.1	29.7	22.9	8.5	17.7	49.2	37.8	10.5	24.7	61.0	27.8
			9	3.9	5.4	22.9	18.1	4.5	6.6	26.0	20.0	7.4	14.4	43.0	33.1	9.18	20.1	53.4	26.7
		6	5	9.0	19.6	52.5	31.8	9.8	22.1	56.9	37.9	13.9	38.0	80.5	53.7	16.5	49.7	95.8	37.7
			6	8.2	16.8	47.6	28.8	8.9	19.0	51.5	34.3	12.5	32.6	73.0	48.6	15.7	46.1	91.2	36.3
			7	7.2	13.9	42.1	25.5	7.8	15.7	45.6	30.4	11.1	27.0	64.6	43.0	14.9	42.7	86.9	35.4
			8	6.4	11.6	37.5	22.7	7.0	13.1	40.6	27.1	9.9	22.5	57.5	38.3	14.2	39.7	82.9	33.6
			9	5.6	9.4	32.8	19.9	6.1	10.7	35.5	23.7	8.6	18.3	50.3	33.5	13.6	36.7	78.8	32.2
		8	5	10.2	23.5	59.1	35.8	10.9	26.3	63.5	39.2	15.0	43.0	87.3	49.6	23.9	88.7	139.0	54.1
			6	9.2	20.2	53.6	32.5	9.9	22.5	57.5	35.5	13.6	36.9	79.0	44.9	22.8	82.2	133.0	52.0
			7	8.2	16.7	47.4	28.7	8.8	18.6	50.9	31.4	12.0	30.5	69.9	39.7	21.7	76.2	126.0	50.7
			8	7.3	13.9	42.2	25.6	7.8	15.6	45.3	28.0	10.7	25.5	62.2	35.4	20.7	70.8	120.0	48.1
			9	6.4	11.3	36.9	22.4	6.8	12.6	39.6	24.5	9.4	20.7	54.5	30.9	19.7	65.6	115.0	46.2
KD(X) -7	7000	4	5	7.8	11.5	45.5	36.0	8.9	14.0	51.7	39.8	14.7	30.6	85.6	65.8	17.4	39.8	101.0	41.9
			6	6.9	9.4	39.9	31.6	7.8	11.4	45.4	34.9	12.9	24.9	75.1	57.7	16.6	36.9	96.6	40.3
			7	5.9	7.4	34.4	27.2	6.7	9.1	39.1	30.1	11.1	19.8	64.7	49.8	15.8	34.2	92.0	39.3
			8	5.3	6.2	30.6	24.2	6.0	7.6	34.8	26.8	9.9	16.5	57.6	44.3	14.4	28.5	81.9	37.3
			9	4.6	5.0	26.8	21.2	5.2	6.2	30.5	23.4	8.7	13.4	50.4	38.8	12.3	23.2	71.6	35.8
		6	5	10.7	18.7	62.4	37.8	11.6	21.2	67.6	45.0	16.5	36.3	95.7	63.8	19.2	46.2	112.0	44.0
			6	9.7	16.0	56.5	34.2	10.5	18.2	61.2	40.8	14.9	31.2	86.7	57.8	18.3	42.9	106.0	42.3
			7	8.6	13.3	50.0	30.3	9.3	15.0	54.2	36.1	13.2	25.8	76.7	51.1	17.4	39.7	101.0	41.2
			8	7.7	11.1	44.5	27.0	8.3	12.5	48.2	32.1	11.7	21.5	68.3	45.5	16.6	36.9	96.7	39.2
			9	6.7	9.0	38.9	23.6	7.3	10.2	42.2	28.1	10.3	17.5	59.7	39.8	15.8	34.2	92.0	37.6
		8	5	13.8	27.7	80.3	48.6	14.8	30.9	86.2	53.2	20.4	50.6	118.0	67.3	25.6	72.1	149.0	57.8
			6	12.5	23.7	72.7	44.1	13.4	26.5	78.1	48.2	18.5	43.4	107.0	61.0	24.4	66.9	142.0	55.7
			7	11.1	19.6	64.3	39.0	11.9	21.9	69.1	42.7	16.3	35.9	94.9	53.9	23.2	62.0	135.0	54.2
			8	9.9	16.4	57.3	34.7	10.6	18.3	61.5	38.0	14.5	30.0	84.5	48.0	22.1	57.6	129.0	51.5
			9	8.6	13.3	50.1	30.4	9.3	14.9	53.8	33.2	12.7	24.4	73.9	42.0	21.1	53.3	123.0	49.4

注：进水温度7℃，进出水温差5℃。

Note: The water feed temp is 7℃, the temp difference between feeding and leaving is 5℃.



组合式空调机组
Combination air-handling units



吊顶式空调机组KD(X)系列
KD(X) series of ceiling air-handling units



KDS(X) 系列吊顶射流空调机组
KDS (X) Series Of Suspended Ceiling Jet Type Air Handling Unit



风机盘管机组
Fan-coils

吊顶式空调机组供冷能力表5

Cooling capacity table 5 of suspended air conditioning unit

型号 Model	风量 m³/h Air flow	管排数 Rows No.	进水温度 ℃ Water feed temps	进风温度 (干球温度/湿球温度) Air intake temps(dry bulb/wet bulb)															
				26℃/19℃				27℃/19.5℃				29℃/22℃				全新风35℃/28℃ All fresh air 35℃/28℃			
				水流量 m³/h Water flow	水阻力 Kpa Water resistance	额定供 冷量 kW Rated cooling capacity	显热冷 量 kW Sensible heat cooling capacity	水流量 m³/h Water flow	水阻力 Kpa Water resistance	额定供 冷量 kW Rated cooling capacity	显热冷 量 kW Sensible heat cooling capacity	水流量 m³/h Water flow	水阻力 Kpa Water resistance	额定供 冷量 kW Rated cooling capacity	显热冷 量 kW Sensible heat cooling capacity	水流量 m³/h Water flow	水阻力 Kpa Water resistance	额定供 冷量 kW Rated cooling capacity	显热冷 量 kW Sensible heat cooling capacity
KD(X) -8	8000	4	5	8.9	12.3	51.8	41.0	10.1	15.0	58.9	45.3	16.8	32.7	97.5	75.0	19.9	42.7	115.9	47.9
			6	7.8	10.0	45.4	36.0	8.9	12.2	51.7	39.8	14.7	26.7	85.5	65.8	19.0	39.6	110.4	46.1
			7	6.7	7.9	39.2	31.0	7.7	9.7	44.6	34.3	12.7	21.2	73.7	56.7	18.1	36.7	105.1	44.9
			8	6.0	6.6	34.9	27.6	6.8	8.1	39.7	30.5	11.3	17.7	65.6	50.5	16.1	30.7	93.5	42.7
			9	5.3	5.4	30.5	24.1	6.0	6.6	34.7	26.7	9.9	14.4	57.4	44.1	14.1	24.9	81.9	41.0
		6	5	12.0	19.6	70.0	42.4	13.0	22.1	75.8	50.6	18.5	38.0	107.0	71.6	22.0	49.7	127.7	50.3
			6	10.9	16.8	63.4	38.4	11.8	19.0	68.7	45.8	16.7	32.6	97.3	64.9	20.9	46.1	121.6	48.4
			7	9.7	13.9	56.1	34.0	10.5	15.7	60.8	40.5	14.8	27.0	86.1	57.4	19.9	42.7	115.8	47.1
			8	8.6	11.6	49.9	30.3	9.3	13.1	54.1	36.1	13.2	22.5	76.6	51.1	19.0	39.7	110.5	44.8
			9	7.5	9.4	43.7	26.5	8.1	10.7	47.3	31.6	11.5	18.3	67.0	44.7	18.1	36.7	105.0	43.0
		8	5	15.1	27.8	87.9	53.2	16.2	31.1	94.4	58.3	22.3	50.9	130.0	73.7	25.4	62.4	147.9	57.5
			6	13.7	23.9	79.6	48.2	14.7	26.7	85.5	52.8	20.2	43.6	117.0	66.7	24.2	57.9	140.9	55.3
			7	12.1	19.7	70.4	42.7	13.0	22.1	75.6	46.7	17.9	36.1	104.0	59.1	23.1	53.6	134.2	53.9
			8	10.8	16.5	62.7	38.0	11.6	18.4	67.3	41.6	15.9	30.1	92.5	52.6	22.0	49.8	127.9	51.2
			9	9.4	13.4	54.8	33.2	10.1	15.0	58.9	36.4	13.9	24.5	80.9	46.0	20.9	46.1	121.7	49.1
KD(X) -10	10000	4	5	11.5	14.4	67.0	53.0	13.1	17.6	76.2	58.6	21.7	38.3	126.0	96.9	21.7	38.3	126.0	52.1
			6	10.1	11.7	58.8	46.5	11.5	14.3	66.8	51.4	19.0	31.3	111.0	85.0	20.6	35.5	120.0	50.1
			7	8.7	9.3	50.6	40.1	9.9	11.4	57.6	44.3	16.4	24.9	95.3	73.3	19.6	32.9	114.2	48.8
			8	7.8	7.8	45.1	35.7	8.8	9.5	51.3	39.4	14.6	20.7	84.8	65.2	17.5	27.5	101.7	46.4
			9	6.8	6.3	39.4	31.2	7.7	7.7	44.9	34.5	12.8	16.9	74.2	57.1	15.3	22.3	89.0	44.5
		6	5	15.6	23.0	90.6	54.9	16.9	26.0	98.2	65.4	23.9	44.6	139.0	92.7	27.5	55.3	159.6	62.8
			6	14.1	19.7	82.1	49.7	15.3	22.3	88.9	59.3	21.7	38.3	126.0	83.9	26.1	51.3	152.0	60.5
			7	12.5	16.3	72.6	44.0	13.5	18.5	78.7	52.5	19.2	31.7	111.0	74.3	24.9	47.5	144.8	58.9
			8	11.1	13.6	64.6	39.2	12.0	15.4	70.0	46.7	17.1	26.4	99.2	66.1	23.7	44.2	138.1	56.0
			9	9.7	11.1	56.6	34.3	10.5	12.5	61.3	40.9	14.9	21.5	86.8	57.8	22.6	40.9	131.4	53.7
		8	5	18.7	30.6	109.0	66.0	20.1	34.1	117.0	72.2	27.6	55.9	161.0	91.3	31.8	69.5	184.9	71.8
			6	17.0	26.2	98.6	59.8	18.2	29.3	106.0	65.4	25.0	47.9	146.0	82.7	30.3	64.4	176.1	69.1
			7	15.0	21.7	87.3	52.9	16.1	24.2	93.8	57.9	22.2	39.7	129.0	73.2	28.8	59.7	167.7	67.3
			8	13.4	18.1	77.7	47.1	14.4	20.2	83.5	51.5	19.7	33.1	115.0	65.2	27.5	55.5	159.9	64.0
			9	11.7	14.7	68.0	41.2	12.6	16.4	73.0	45.1	17.3	26.9	100.0	57.0	26.2	51.3	152.2	61.4

注：进水温度7℃，进出水温差5℃。

Note: The water feed temp is 7℃, the temp difference between feeding and leaving is 5℃.

吊顶式空调机组供冷能力表6

Cooling capacity table 6 of suspended air conditioning unit

型号 Model	风量 m³/h Air flow	管排数 Rows No.	进水温度 ℃ Water feed temps	进风温度(干球温度/湿球温度) Air intake temps(dry bulb/wet bulb)															
				26℃/19℃				27℃/19.5℃				29℃/22℃				全新风35℃/28℃ All fresh air 35℃/28℃			
				水流量 m³/h Water flow	水阻力 Kpa Water resistance	额定供 冷量 kW Rated cooling capacity	显热冷 量 kW Sensible heat cooling capacity	水流量 m³/h Water flow	水阻力 Kpa Water resistance	额定供 冷量 kW Rated cooling capacity	显热冷 量 kW Sensible heat cooling capacity	水流量 m³/h Water flow	水阻力 Kpa Water resistance	额定供 冷量 kW Rated cooling capacity	显热冷 量 kW Sensible heat cooling capacity	水流量 m³/h Water flow	水阻力 Kpa Water resistance	额定供 冷量 kW Rated cooling capacity	显热冷 量 kW Sensible heat cooling capacity
KD(X) -12	12000	4	5	13.9	15.7	80.9	64.1	15.8	19.1	92.0	70.8	26.2	41.8	152.2	117.1	26.0	41.3	151.1	62.5
			6	12.2	12.8	71.0	56.2	13.9	15.6	80.7	62.1	23.0	34.1	133.5	102.7	24.8	38.3	143.9	60.1
			7	10.5	10.2	61.2	48.4	12.0	12.4	69.6	53.5	19.8	27.1	115.1	88.6	23.6	35.5	137.1	58.6
			8	9.4	8.5	54.4	43.1	10.7	10.4	61.9	47.6	17.6	22.6	102.5	78.8	21.0	29.6	122.0	55.7
			9	8.2	6.9	47.6	37.7	9.3	8.4	54.2	41.7	15.4	18.4	89.6	69.0	18.4	24.1	106.8	53.4
		6	5	17.4	22.2	101.3	61.4	18.9	25.1	109.7	73.2	26.7	43.1	155.4	103.6	32.9	59.6	191.6	75.4
			6	15.8	19.0	91.7	55.6	17.1	21.6	99.4	66.3	24.2	37.0	140.8	93.8	31.4	55.3	182.4	72.6
			7	14.0	15.8	81.2	49.2	15.1	17.8	88.0	58.6	21.4	30.6	124.6	83.0	29.9	51.3	173.7	70.7
			8	12.4	13.2	72.3	43.8	13.5	14.9	78.3	52.2	19.1	25.5	110.9	73.9	28.5	47.6	165.7	67.2
			9	10.9	10.7	63.2	38.3	11.8	12.1	68.5	45.7	16.7	20.8	97.0	64.7	27.1	44.1	157.7	64.5
		8	5	22.5	33.0	130.7	79.2	24.1	36.8	140.4	86.7	33.2	60.3	192.9	109.6	38.2	74.9	221.9	86.2
			6	20.4	28.3	118.4	71.8	21.9	31.6	127.2	78.5	30.0	51.7	174.7	99.3	36.3	69.5	211.3	83.0
			7	18.0	23.4	104.8	63.5	19.4	26.1	112.5	69.5	26.6	42.8	154.6	87.9	34.6	64.4	201.2	80.8
			8	16.0	19.5	93.2	56.5	17.2	21.8	100.2	61.8	23.7	35.7	137.6	78.2	33.0	59.8	191.9	76.8
			9	14.0	15.9	81.6	49.4	15.1	17.7	87.6	54.1	20.7	29.0	120.4	68.4	31.4	55.4	182.6	73.7
KD(X) -13.5	13500	4	5	15.7	17.1	91.1	72.1	17.8	20.9	103.6	79.7	29.5	45.7	171.4	131.8	29.2	45.1	170.0	70.3
			6	13.7	14.0	79.9	63.3	15.6	17.1	90.9	69.9	25.9	37.3	150.3	115.6	27.8	41.8	161.9	67.7
			7	11.8	11.1	68.9	54.5	13.5	13.6	78.3	60.3	22.3	29.6	129.6	99.7	26.5	38.8	154.2	65.9
			8	10.5	9.3	61.3	48.5	12.0	11.3	69.7	53.6	19.8	24.7	115.3	88.7	23.6	32.4	137.3	62.6
			9	9.2	7.5	53.6	42.5	10.5	9.2	61.0	46.9	17.4	20.1	10.9	77.6	20.7	26.3	120.1	60.1
		6	5	21.1	27.1	122.5	74.2	22.8	30.7	132.7	88.5	32.3	52.7	187.9	125.3	37.1	65.2	215.5	84.8
			6	19.1	23.3	111.0	67.2	20.7	26.4	120.2	80.1	29.3	45.2	170.2	113.5	35.3	60.4	205.2	81.7
			7	16.9	19.3	98.2	59.5	18.3	21.8	106.4	70.9	25.9	37.4	150.6	100.4	33.6	56.0	195.5	79.5
			8	15.0	16.1	87.4	53.0	16.3	18.2	94.7	63.1	23.1	31.2	134.1	89.4	32.1	52.1	186.4	75.6
			9	13.2	13.1	76.5	46.3	14.2	14.8	82.8	55.2	20.2	25.4	117.3	78.2	30.5	48.2	177.4	72.5
		8	5	25.3	36.0	147.0	89.1	27.2	40.2	157.9	97.5	37.3	65.9	217.0	123.3	42.9	81.9	249.6	97.0
			6	22.9	30.9	133.2	80.7	24.6	34.5	143.0	88.3	33.8	56.5	196.5	111.7	40.9	75.9	237.7	93.3
			7	20.3	25.6	117.9	71.4	21.8	28.6	126.6	78.1	29.9	46.7	173.9	98.8	38.9	70.4	226.4	90.9
			8	18.0	21.3	104.9	63.6	19.4	23.8	112.7	69.5	26.6	39.0	154.8	88.0	37.1	65.4	215.9	86.4
			9	15.8	17.3	91.8	55.6	17.0	19.4	98.6	60.9	23.3	31.7	135.4	77.0	35.3	60.5	205.4	82.9

注：进水温度7℃，进出水温差5℃。

Note: The water feed temp is 7℃, the temp difference between feeding and leaving is 5℃.



组合式空调机组
Combination air-handling units



吊顶式空调机组KD(X)系列
KD(X) series of ceiling air-handling units



KDS(X) 系列吊顶射流空调机组
KDS(X) Series Of Suspended Ceiling Jet Type Air Handling Unit



风机盘管机组
Fan-coils

吊顶式空调机组供冷能力表7

Cooling capacity table 7 of suspended air conditioning unit

型号 Model	风量 m³/h Air flow	管排数 Rows No.	进水温度 ℃ Water feed temps	进风温度(干球温度/湿球温度) Air intake temps(dry bulb/wet bulb)															
				26℃/19℃				27℃/19.5℃				29℃/22℃				全新风35℃/28℃ All fresh air 35℃/28℃			
				水流量 m³/h Water flow	水阻力 Kpa Water resistance	额定供 冷量 kW Rated cooling capacity	显热冷 量 kW Sensible heat cooling capacity	水流量 m³/h Water flow	水阻力 Kpa Water resistance	额定供 冷量 kW Rated cooling capacity	显热冷 量 kW Sensible heat cooling capacity	水流量 m³/h Water flow	水阻力 Kpa Water resistance	额定供 冷量 kW Rated cooling capacity	显热冷 量 kW Sensible heat cooling capacity	水流量 m³/h Water flow	水阻力 Kpa Water resistance	额定供 冷量 kW Rated cooling capacity	显热冷 量 kW Sensible heat cooling capacity
KD(X) -15	15000	4	5	18.7	20.6	108.6	86.0	21.3	25.2	123.6	95.1	35.2	55.0	204.4	157.3	32.5	48.6	188.9	78.1
			6	16.4	16.8	95.3	75.5	18.6	20.6	108.4	83.4	30.8	44.9	179.3	137.9	30.9	45.1	179.9	75.2
			7	14.1	13.4	82.2	65.0	16.1	16.3	93.5	71.9	26.6	35.6	154.6	118.9	29.5	41.8	171.4	73.2
			8	12.6	11.2	73.1	57.9	14.3	13.6	83.2	64.0	23.7	29.7	137.6	105.8	26.2	34.9	152.5	69.6
			9	11.0	9.1	64.0	50.7	12.5	11.1	72.8	56.0	20.7	24.2	120.4	92.6	22.9	28.4	133.5	66.8
		6	5	23.8	30.0	138.5	83.9	25.8	34.0	150.0	100.0	36.5	58.3	212.4	141.6	41.2	70.2	239.4	94.3
			6	21.6	25.8	125.4	76.0	23.4	29.2	135.9	90.6	33.1	50.0	192.4	128.3	39.2	65.1	228.0	90.7
			7	19.1	21.3	111.0	67.3	20.7	24.1	120.3	80.2	29.3	41.4	170.3	113.5	37.3	60.4	217.2	88.4
			8	17.0	17.8	98.8	59.9	18.4	20.1	107.0	71.4	26.1	34.6	151.6	101.0	35.6	56.1	207.1	84.0
			9	14.9	14.5	86.4	52.4	16.1	16.4	93.6	62.4	22.8	28.1	132.6	88.4	33.9	51.9	197.1	80.6
		8	5	28.1	38.8	163.2	98.9	30.2	43.3	175.3	108.2	41.4	70.9	240.9	136.9	47.7	88.2	277.3	107.7
			6	25.4	33.3	147.9	89.6	27.3	37.2	158.8	98.0	37.5	60.8	218.2	124.0	45.4	81.8	264.1	103.7
			7	22.5	27.5	130.9	79.3	24.2	30.7	140.6	86.8	33.2	50.3	193.1	109.7	43.3	75.8	251.5	101.0
			8	20.0	23.0	116.5	70.6	21.5	25.7	125.1	77.2	29.6	42.0	171.9	97.7	41.3	70.4	239.9	96.0
			9	17.5	18.7	101.9	61.8	18.8	20.9	109.5	67.6	25.9	34.1	150.4	85.4	39.3	65.2	228.3	92.1

注：进水温度7℃，进出水温差5℃。

Note: The water feed temp is 7℃, the temp difference between feeding and leaving is 5℃.

吊顶式空调机组供热能力表1

Heating capacity table 1 of suspended air conditioning unit

型号 Model	风量 m³/h Air flow	管排数 Rows No.	进水温度 ℃ Water feed temps	进风温度 (干球温度/湿球温度) Air intake temps(dry bulb/wet bulb)											
				18℃			15℃			20℃			全新风7℃ All fresh air 7℃		
				水流量 m³/h Water flow	水阻力 Kpa Water resistance	供热量 kW Heating capacity	水流量 m³/h Water flow	水阻力 Kpa Water resistance	供热量 kW Heating capacity	水流量 m³/h Water flow	水阻力 Kpa Water resistance	供热量 kW Heating capacity	水流量 m³/h Water flow	水阻力 Kpa Water resistance	供热量 kW Heating capacity
KD(X) -1.5	1500	4	45	0.6	0.9	6.8	0.6	1.1	7.3	0.6	0.9	6.5	0.6	0.8	6.5
			50	0.7	1.4	8.5	0.8	1.6	9.1	0.7	1.3	8.1	0.7	1.1	8.1
			60	1.0	2.4	12.2	1.1	2.7	13.1	1.0	2.3	11.6	1.3	3.5	15.4
			70	1.3	3.6	15.7	1.4	4.0	16.8	1.3	3.4	14.9	1.7	4.3	19.8
			80	1.6	4.9	19.1	1.8	5.5	20.5	1.6	4.6	18.2	2.1	5.9	24.1
		6	45	0.8	0.8	8.9	0.8	0.9	9.6	0.7	0.8	8.5	1.0	1.2	11.3
			50	1.0	1.1	11.2	1.0	1.3	12.0	0.9	1.0	10.6	1.2	1.6	14.1
			60	1.4	1.9	15.9	1.5	2.2	17.1	1.3	1.8	15.2	1.7	2.9	20.1
			70	1.8	2.9	20.5	1.9	3.3	22.0	1.7	2.7	19.5	2.2	4.2	25.9
			80	2.1	3.9	25.0	2.3	4.4	26.8	2.0	3.7	23.8	2.7	5.7	31.6
		8	45	1.0	0.8	11.6	1.1	0.9	12.4	0.9	0.7	11.0	1.3	1.1	14.6
			50	1.2	1.1	14.4	1.3	1.2	15.5	1.2	1.0	13.8	1.6	1.6	18.2
			60	1.8	1.9	20.6	1.9	2.1	22.1	1.7	1.8	19.7	2.2	2.7	26.0
			70	2.3	2.8	26.6	2.4	3.1	28.5	2.2	2.6	25.3	2.9	4.0	33.5
			80	2.8	3.8	32.4	3.0	4.2	34.7	2.6	3.5	30.8	3.5	5.5	40.9
KD(X) -2	2000	4	45	0.8	1.5	9.1	0.8	1.7	9.8	0.7	1.4	8.7	1.0	2.2	11.5
			50	1.0	2.2	11.4	1.0	2.4	12.2	0.9	2.0	10.8	1.2	3.1	14.4
			60	1.4	3.8	16.3	1.5	4.2	17.4	1.3	3.5	15.5	1.8	5.5	20.5
			70	1.8	5.6	20.9	1.9	6.3	22.4	1.7	5.2	19.9	2.3	8.1	26.4
			80	2.2	7.7	25.5	2.3	8.5	27.3	2.1	7.1	24.3	2.8	11.0	32.2
		6	45	1.0	1.3	11.9	1.1	1.4	12.8	1.0	1.2	11.3	1.3	1.8	15.0
			50	1.3	1.8	14.9	1.4	2.0	15.9	1.2	1.6	14.2	1.6	2.5	18.8
			60	1.8	3.1	21.3	2.0	3.4	22.8	1.7	2.9	20.2	2.3	4.4	26.8
			70	2.4	4.6	27.3	2.5	5.1	29.3	2.2	4.2	26.1	3.0	6.5	34.5
			80	2.9	6.2	33.4	3.1	6.9	35.7	2.7	5.7	31.8	3.6	8.9	42.1
		8	45	1.3	1.2	15.4	1.4	1.3	16.5	1.3	1.1	14.7	1.7	1.7	19.4
			50	1.7	1.7	19.3	1.8	1.9	20.6	1.6	1.6	18.3	2.1	2.4	24.3
			60	2.4	2.9	27.5	2.5	3.3	29.5	2.3	2.7	26.2	3.0	4.2	34.7
			70	3.0	4.3	35.4	3.3	4.8	37.9	2.9	4.1	33.7	3.8	6.2	44.7
			80	3.7	5.9	43.2	4.0	6.6	46.2	3.5	5.7	41.1	4.7	8.5	54.5

注：进水温度60℃，进出水温差10℃。

Note: The water feed temp is 60℃, the temp difference between feeding and leaving is 10℃.



吊顶式空调机组供热能力表2

Heating capacity table 2 of suspended air conditioning unit

型号 Model	风量 m³/h Air flow	管排数 Rows No.	进水温度 ℃ Water feed temps	进风温度 (干球温度/湿球温度) Air intake temps(dry bulb/wet bulb)											
				18℃			15℃			20℃			全新风7℃ All fresh air 7℃		
				水流量 m³/h Water flow	水阻力 Kpa Water resistance	供热量 kW Heating capacity	水流量 m³/h Water flow	水阻力 Kpa Water resistance	供热量 kW Heating capacity	水流量 m³/h Water flow	水阻力 Kpa Water resistance	供热量 kW Heating capacity	水流量 m³/h Water flow	水阻力 Kpa Water resistance	供热量 kW Heating capacity
KD(X) -2.5	2500	4	45	1.0	2.2	11.4	1.0	2.4	12.2	0.9	2.0	10.8	0.9	2.0	10.8
			50	1.2	3.1	14.2	1.3	3.4	15.2	1.2	2.9	13.5	1.2	2.9	13.5
			60	1.7	5.4	20.3	1.9	6.0	21.8	1.7	5.0	19.4	2.2	7.7	25.6
			70	2.2	8.0	26.2	2.4	8.9	28.0	2.1	7.4	24.9	2.1	7.4	24.9
			80	2.7	10.8	31.9	2.9	12.0	34.2	2.6	10.0	30.4	2.6	10.0	30.4
		6	45	1.3	1.8	14.9	1.4	2.0	15.9	1.2	1.6	14.2	1.6	2.5	18.8
			50	1.6	2.5	18.6	1.7	2.8	19.9	1.5	2.3	17.7	2.0	3.6	23.5
			60	2.3	4.3	26.6	2.4	4.8	28.5	2.2	4.0	25.3	2.9	6.2	33.5
			70	2.9	6.4	34.2	3.1	7.2	36.6	2.8	6.0	32.6	3.7	9.2	43.2
			80	3.6	8.7	41.7	3.8	9.7	44.7	3.4	8.1	39.7	4.5	12.5	52.6
		8	45	1.7	1.7	19.3	1.8	1.9	20.6	1.6	1.6	18.3	2.1	2.4	24.3
			50	2.1	2.4	24.1	2.2	2.7	25.8	2.0	2.2	22.9	2.6	3.4	30.4
			60	3.0	4.2	34.4	3.2	4.6	36.9	2.8	3.8	32.8	3.7	6.0	43.4
			70	3.8	6.1	44.3	4.1	6.8	47.4	3.6	5.7	42.2	4.8	8.8	55.9
			80	4.6	8.3	54.0	5.0	9.3	57.8	4.4	7.7	51.4	5.9	12.0	68.1
KD(X) -3	3000	4	45	1.2	2.9	13.7	1.3	3.2	14.6	1.1	2.7	13.0	1.5	4.2	17.2
			50	1.5	4.1	17.1	1.6	4.6	18.3	1.4	3.8	16.3	1.9	5.9	21.5
			60	2.1	7.1	24.4	2.2	7.9	26.1	2.0	6.6	23.2	2.6	10.2	30.8
			70	2.7	10.6	31.4	2.9	11.8	33.6	2.6	9.8	29.9	3.4	15.1	39.6
			80	3.3	14.4	38.3	3.5	16.0	41.0	3.1	13.3	36.4	4.1	20.6	48.3
		6	45	1.5	2.3	17.9	1.6	2.6	19.1	1.5	2.2	17.0	1.9	3.4	22.5
			50	1.9	3.3	22.3	2.1	3.7	23.9	1.8	3.1	21.3	2.4	4.8	28.2
			60	2.7	5.8	31.9	2.9	6.4	34.2	2.6	5.4	30.4	3.5	8.3	40.2
			70	3.5	8.5	41.0	3.8	9.5	44.0	3.4	7.9	39.1	4.5	12.2	51.8
			80	4.3	11.6	50.0	4.6	12.9	53.6	4.1	10.8	47.7	5.4	16.6	63.1
		8	45	2.0	2.2	23.1	2.1	2.5	24.8	1.9	2.1	22.0	2.5	3.2	29.2
			50	2.5	3.2	28.9	2.7	3.5	31.0	2.4	2.9	27.5	3.1	4.5	36.5
			60	3.5	5.5	41.3	3.8	6.1	44.2	3.4	5.1	39.3	4.5	7.9	52.1
			70	4.6	8.1	53.1	4.9	9.1	56.9	4.3	7.6	50.6	5.8	11.7	67.0
			80	5.6	11.1	64.7	6.0	12.3	69.4	5.3	10.3	61.7	7.0	15.9	81.7

注：进水温度60℃，进出水温差10℃。

Note: The water feed temp is 60℃, the temp difference between feeding and leaving is 10℃.

吊顶式空调机组供热能力表3

Heating capacity table 3 of suspended air conditioning unit

型号 Model	风量 m³/h Air flow	管排数 Rows No.	进水温度 ℃ Water feed temps	进风温度 (干球温度/湿球温度) Air intake temps(dry bulb/wet bulb)											
				18℃			15℃			20℃			全新风7℃ All fresh air 7℃		
				水流量 m³/h Water flow	水阻力 Kpa Water resistance	供热量 kW Heating capacity	水流量 m³/h Water flow	水阻力 Kpa Water resistance	供热量 kW Heating capacity	水流量 m³/h Water flow	水阻力 Kpa Water resistance	供热量 kW Heating capacity	水流量 m³/h Water flow	水阻力 Kpa Water resistance	供热量 kW Heating capacity
KD(X) -4	4000	4	45	1.6	4.5	18.2	1.7	3.5	19.5	1.5	2.6	17.3	1.5	7.0	17.3
			50	2.0	6.4	22.8	2.1	5.2	24.4	1.9	3.9	21.7	1.9	8.4	21.7
			60	2.8	11.2	32.5	3.0	9.2	34.8	2.7	6.8	31.0	3.5	14.7	39.9
			70	3.6	16.5	41.8	3.9	12.0	44.8	3.4	10.2	39.9	3.4	19.1	41.0
			80	4.4	22.4	51.0	4.7	16.7	54.7	4.2	14.2	48.6	4.2	23.9	48.6
		6	45	2.0	4.6	23.8	2.2	5.2	25.5	1.9	3.8	22.7	2.6	7.9	30.0
			50	2.6	6.8	29.8	2.7	7.8	31.9	2.4	5.7	28.3	3.2	9.5	37.6
			60	3.7	12.0	42.5	3.9	13.6	45.6	3.5	10.0	40.5	4.6	16.6	53.7
			70	4.7	14.4	54.7	5.0	16.3	58.6	4.5	15.1	52.1	5.9	21.5	69.1
			80	5.7	20.1	66.7	6.1	22.8	71.5	5.5	21.0	63.5	7.2	26.9	84.2
		8	45	2.6	6.3	30.8	2.8	7.1	33.0	2.5	5.2	29.3	3.3	11.2	38.9
			50	3.3	9.3	38.5	3.5	10.6	41.3	3.2	7.8	36.7	4.2	13.5	48.6
			60	4.7	16.4	55.0	5.1	18.6	59.0	4.5	13.7	52.4	6.0	23.6	69.4
			70	6.1	18.8	70.8	6.5	21.4	75.9	5.8	20.6	67.5	7.7	30.6	89.4
			80	7.4	26.3	86.3	7.9	29.9	92.5	7.1	28.8	82.2	9.4	38.3	108.9
KD(X) -5	5000	4	45	2.0	3.3	22.8	2.1	3.8	24.4	1.9	2.8	21.7	2.5	6.6	28.7
			50	2.4	5.0	28.5	2.6	5.6	30.5	2.3	4.2	27.1	3.1	9.9	35.9
			60	3.5	8.7	40.6	3.7	9.9	43.6	3.3	7.3	38.7	4.4	17.3	51.3
			70	4.5	13.1	52.3	4.8	14.9	56.0	4.3	11.0	49.8	5.7	22.5	66.0
			80	5.5	18.3	63.8	5.9	20.7	68.3	5.2	15.3	60.7	6.9	28.1	80.5
		6	45	2.6	4.7	29.8	2.7	5.3	31.9	2.4	3.9	28.3	3.2	8.8	37.6
			50	3.2	7.0	37.2	3.4	7.9	39.9	3.0	5.8	35.4	4.0	10.6	47.0
			60	4.6	12.2	53.2	4.9	13.9	57.0	4.3	10.3	50.6	5.8	18.6	67.1
			70	5.9	18.4	68.4	6.3	20.9	73.3	5.6	15.4	65.2	7.4	24.1	86.3
			80	7.2	25.7	83.4	7.7	29.1	89.3	6.8	21.5	79.4	9.0	30.1	105.2
		8	45	3.3	6.8	38.5	3.5	7.7	41.3	3.2	5.7	36.7	4.2	14.5	48.6
			50	4.1	10.1	48.2	4.4	11.5	51.6	3.9	8.5	45.9	5.2	17.5	60.8
			60	5.9	17.8	68.8	6.3	20.2	73.7	5.6	14.9	65.5	7.5	30.7	86.8
			70	7.6	19.6	88.5	8.1	22.2	94.9	7.2	22.4	84.3	9.6	34.4	111.7
			80	9.3	27.3	107.9	9.9	31.0	115.6	8.8	31.2	102.8	11.7	43.0	136.2

注：进水温度60℃，进出水温差10℃。

Note: The water feed temp is 60℃, the temp difference between feeding and leaving is 10℃.



吊顶式空调机组供热能力表4

Heating capacity table 4 of suspended air conditioning unit

型号 Model	风量 m³/h Air flow	管排数 Rows No.	进水温度 ℃ Water feed temps	进风温度 (干球温度/湿球温度) Air intake temps(dry bulb/wet bulb)											
				18℃			15℃			20℃			全新风7℃ All fresh air 7℃		
				水流量 m³/h Water flow	水阻力 Kpa Water resistance	供热量 kW Heating capacity	水流量 m³/h Water flow	水阻力 Kpa Water resistance	供热量 kW Heating capacity	水流量 m³/h Water flow	水阻力 Kpa Water resistance	供热量 kW Heating capacity	水流量 m³/h Water flow	水阻力 Kpa Water resistance	供热量 kW Heating capacity
KD(X) -6	6000	4	45	2.3	2.4	27.3	2.5	2.7	29.3	2.2	2.2	26.0	3.0	3.5	34.5
			50	2.9	3.4	34.1	3.1	3.8	36.6	2.8	3.2	32.5	3.7	4.9	43.1
			60	4.2	5.9	48.8	4.5	6.6	52.3	4.0	5.5	46.5	5.3	8.5	61.6
			70	5.4	8.8	62.8	5.8	9.8	67.3	5.1	8.2	59.8	6.8	12.6	79.2
			80	6.6	12.0	76.5	7.0	13.3	82.0	6.3	11.1	72.9	8.3	17.2	96.6
		6	45	3.1	3.7	35.7	3.3	4.1	38.3	2.9	3.4	34.0	3.9	5.3	45.1
			50	3.8	5.2	44.6	4.1	5.8	47.8	3.7	4.8	42.5	4.8	7.4	56.3
			60	5.5	9.0	63.8	5.9	10.0	68.3	5.2	8.4	60.7	6.9	12.9	80.5
			70	7.1	13.3	82.1	7.6	14.8	88.0	6.7	12.4	78.2	8.9	19.1	103.6
			80	8.6	18.1	100.1	9.2	20.2	107.2	8.2	16.8	95.3	10.8	26.0	126.3
		8	45	4.0	5.5	46.2	4.3	6.1	49.5	3.8	5.1	44.0	5.0	7.8	58.3
			50	5.0	7.7	57.8	5.3	8.6	61.9	4.7	7.2	55.0	6.3	11.1	72.9
			60	7.1	13.4	82.5	7.6	15.0	88.4	6.8	12.5	78.6	8.9	19.3	104.2
			70	9.1	19.9	106.2	9.8	22.1	113.8	8.7	18.4	101.2	11.5	28.5	134.1
			80	11.1	27.0	129.5	11.9	30.1	138.7	10.6	25.1	123.3	14.0	38.8	163.4
KD(X) -7	7000	4	45	2.7	2.3	31.9	2.9	2.5	34.1	2.6	2.1	30.3	3.5	3.2	40.2
			50	3.4	3.2	39.8	3.7	3.5	42.7	3.3	3.0	37.9	4.3	4.6	50.3
			60	4.9	5.5	56.9	5.2	6.2	61.0	4.7	5.1	54.2	6.2	7.9	71.8
			70	6.3	8.2	73.2	6.7	9.1	78.5	6.0	7.6	69.7	7.9	11.7	92.4
			80	7.7	11.1	89.3	8.2	12.4	95.7	7.3	10.3	85.0	9.7	16.0	112.7
		6	45	3.6	3.4	41.7	3.8	3.8	44.6	3.4	3.2	39.7	4.5	4.9	52.6
			50	4.5	4.8	52.1	4.8	5.4	55.8	4.3	4.5	49.6	5.6	6.9	65.7
			60	6.4	8.4	74.4	6.9	9.3	79.7	6.1	7.8	70.9	8.1	12.0	93.9
			70	8.2	12.4	95.8	8.8	13.8	102.6	7.8	11.5	91.2	10.4	17.8	120.9
			80	10.0	16.9	116.7	10.7	18.8	125.1	9.6	15.6	111.2	12.7	24.2	147.3
		8	45	4.6	5.1	53.9	5.0	5.7	57.8	4.4	4.7	51.4	5.8	7.3	68.1
			50	5.8	7.2	67.4	6.2	8.0	72.2	5.5	6.7	64.2	7.3	10.3	85.1
			60	8.3	12.5	96.3	8.9	13.9	103.2	7.9	11.6	91.7	10.4	17.9	121.5
			70	10.6	18.5	123.9	11.4	20.6	132.8	10.1	17.2	118.0	13.4	26.5	156.4
			80	13.0	25.2	151.1	13.9	28.0	161.9	12.4	23.3	143.9	16.4	36.1	190.7

注：进水温度60℃，进出水温差10℃。

Note: The water feed temp is 60℃, the temp difference between feeding and leaving is 10℃.

吊顶式空调机组供热能力表5
Heating capacity table 5 of suspended air conditioning unit

型号 Model	风量 m³/h Air flow	管排数 Rows No.	进水温度 ℃ Water feed temps	进风温度 (干球温度/湿球温度) Air intake temps(dry bulb/wet bulb)											
				18℃			15℃			20℃			全新风7℃ All fresh air 7℃		
				水流量 m³/h Water flow	水阻力 Kpa Water resistance	供热量 kW Heating capacity	水流量 m³/h Water flow	水阻力 Kpa Water resistance	供热量 kW Heating capacity	水流量 m³/h Water flow	水阻力 Kpa Water resistance	供热量 kW Heating capacity	水流量 m³/h Water flow	水阻力 Kpa Water resistance	供热量 kW Heating capacity
KD(X) -8	8000	4	45	3.1	2.4	36.4	3.4	2.7	39.0	3.0	2.2	34.7	3.9	3.5	46.0
			50	3.9	3.4	45.5	4.2	3.8	48.8	3.7	3.2	43.4	4.9	4.9	57.4
			60	5.6	5.9	65.0	6.0	6.6	69.7	5.3	5.5	61.9	7.1	8.5	82.1
			70	7.2	8.8	83.7	7.7	9.8	89.7	6.8	8.2	79.7	9.1	12.6	105.6
			80	8.8	12.0	102.0	9.4	13.3	109.3	8.3	11.1	97.2	11.1	17.2	128.8
		6	45	4.1	3.7	47.6	4.4	4.1	51.0	3.9	3.4	45.4	5.2	5.3	60.1
			50	5.1	5.2	59.5	5.5	5.8	63.8	4.9	4.8	56.7	6.5	7.4	75.1
			60	7.3	9.0	85.0	7.8	10.0	91.1	7.0	8.4	81.0	9.2	12.9	107.3
			70	9.4	13.3	109.5	10.1	14.8	117.3	9.0	12.4	104.2	11.9	19.1	138.1
			80	11.5	18.1	133.4	12.3	20.2	143.0	10.9	16.8	127.1	14.5	26.0	168.4
		8	45	5.3	5.5	61.6	5.7	6.1	66.0	5.0	5.1	58.7	6.7	7.8	77.8
			50	6.6	7.7	77.0	7.1	8.6	82.5	6.3	7.2	73.4	8.4	11.1	97.2
			60	9.5	13.4	110.1	10.1	15.0	117.9	9.0	12.5	104.8	11.9	19.3	138.9
			70	12.2	19.9	141.6	13.0	22.1	151.8	11.6	18.4	134.9	15.4	28.5	178.7
			80	14.8	27.0	172.7	15.9	30.1	185.0	14.1	25.1	164.4	18.7	38.8	217.9
KD(X) -10	10000	4	45	3.9	2.7	45.5	4.2	3.0	48.8	3.7	2.5	43.4	4.9	3.9	57.4
			50	4.9	3.8	56.9	5.2	4.2	61.0	4.7	3.5	54.2	6.2	5.5	71.8
			60	7.0	6.6	81.3	7.5	7.4	87.1	6.7	6.1	77.4	8.8	9.5	102.6
			70	9.0	9.8	104.6	9.6	10.9	112.1	8.6	9.1	99.6	11.3	14.0	132.0
			80	11.0	13.3	127.5	11.7	14.8	136.6	10.4	12.3	121.5	13.8	19.1	160.9
		6	45	5.1	4.1	59.5	5.5	4.5	63.8	4.9	3.1	56.7	6.5	5.9	75.1
			50	6.4	5.8	74.4	6.9	6.4	79.7	6.1	4.7	70.9	8.1	8.3	93.9
			60	9.1	10.0	106.3	9.8	11.2	113.9	8.7	8.2	101.2	11.5	14.4	134.1
			70	11.8	14.8	136.8	12.6	16.5	146.6	11.2	12.4	130.3	14.8	21.3	172.6
			80	14.3	20.2	166.8	15.4	22.5	178.7	13.6	17.3	158.8	18.1	28.9	210.5
		8	45	6.6	6.1	77.0	7.1	6.8	82.5	6.3	5.6	73.4	8.4	8.7	97.2
			50	8.3	8.6	96.3	8.9	9.6	103.2	7.9	8.0	91.7	10.4	12.3	121.5
			60	11.8	15.0	137.6	12.7	16.7	147.4	11.3	13.9	131.0	14.9	21.5	173.6
			70	15.2	22.1	177.1	16.3	24.6	189.7	14.5	20.5	168.6	19.2	31.8	223.4
			80	18.5	30.1	215.8	19.9	33.5	231.2	17.7	27.9	205.6	23.4	43.2	272.4

注：进水温度60℃，进出水温差10℃。

Note: The water feed temp is 60℃, the temp difference between feeding and leaving is 10℃.



组合式空调机组
Combination air-handling units



吊顶式空调机组KD(X)系列
KD(X) series of ceiling air-handling units



KDS(X) 系列吊顶射流空调机组
KDS(X) Series Of Suspended Ceiling Jet Type Air Handling Unit



风机盘管机组
Fan-coils

吊顶式空调机组供热能力表6

Heating capacity table 6 of suspended air conditioning unit

型号 Model	风量 m³/h Air flow	管排数 Rows No.	进水温度 ℃ Water feed temps	进风温度 (干球温度/湿球温度) Air intake temps(dry bulb/wet bulb)											
				18℃			15℃			20℃			全新风7℃ All fresh air 7℃		
				水流量 m³/h Water flow	水阻力 Kpa Water resistance	供热量 kW Heating capacity	水流量 m³/h Water flow	水阻力 Kpa Water resistance	供热量 kW Heating capacity	水流量 m³/h Water flow	水阻力 Kpa Water resistance	供热量 kW Heating capacity	水流量 m³/h Water flow	水阻力 Kpa Water resistance	供热量 kW Heating capacity
KD(X) -12	12000	4	45	4.7	2.9	54.6	5.0	3.2	58.5	4.5	2.7	52.0	5.9	4.2	68.9
			50	5.9	4.1	68.3	6.3	4.6	73.2	5.6	3.8	65.0	7.4	5.9	86.2
			60	8.4	7.1	97.6	9.0	7.9	104.5	8.0	6.6	92.9	10.6	10.2	123.1
			70	10.8	10.6	125.5	11.6	11.8	134.5	10.3	9.8	119.6	13.6	15.1	158.4
			80	13.1	14.4	153.0	14.1	16.0	164.0	12.5	13.3	145.8	16.6	20.6	193.1
		6	45	6.1	4.4	71.4	6.6	4.9	76.5	5.8	4.1	68.0	7.7	6.3	90.1
			50	7.7	6.2	89.3	8.2	6.9	95.7	7.3	5.8	85.0	9.7	8.9	112.7
			60	11.0	10.8	127.6	11.7	12.0	136.7	10.4	10.0	121.5	13.8	15.5	161.0
			70	14.1	16.0	164.2	15.1	17.8	175.9	13.4	14.8	156.4	17.8	23.0	207.2
			80	17.2	21.8	200.1	18.4	24.2	214.4	16.4	20.2	190.6	21.7	31.2	252.6
		8	45	7.9	6.6	92.4	8.5	7.3	99.1	7.6	6.1	88.0	10.0	9.4	116.7
			50	9.9	9.3	115.6	10.6	10.3	123.8	9.5	8.6	110.1	12.5	13.3	145.8
			60	14.2	16.1	165.1	15.2	18.0	176.9	13.5	15.0	157.2	17.9	23.2	208.3
			70	18.3	23.9	212.5	19.6	26.6	227.6	17.4	22.1	202.4	23.0	34.3	268.1
			80	22.3	32.5	259.0	23.8	36.1	277.5	21.2	30.1	246.7	28.1	46.6	326.8
KD(X) -13.5	13500	4	45	5.3	3.2	61.5	5.7	3.5	65.8	5.0	2.9	58.5	6.7	4.6	77.6
			50	6.6	4.5	76.8	7.1	5.0	82.3	6.3	4.2	73.2	8.3	6.4	96.9
			60	9.4	7.8	109.7	10.1	8.7	117.6	9.0	7.2	104.5	11.9	11.2	138.5
			70	12.1	11.5	141.2	13.0	12.8	151.3	11.6	10.7	134.5	15.3	16.6	178.2
			80	14.8	15.7	172.2	15.8	17.5	184.5	14.1	14.5	164.0	18.7	22.5	217.3
		6	45	6.9	4.8	80.4	7.4	5.4	86.1	6.6	4.5	76.5	8.7	6.9	101.1
			50	8.6	6.8	100.5	9.2	7.6	107.6	8.2	6.3	95.7	10.9	9.8	126.8
			60	12.3	11.8	143.5	13.2	13.2	153.8	11.7	11.0	136.7	15.6	17.0	181.1
			70	15.9	17.5	184.7	17.0	19.5	197.9	15.1	16.2	175.9	20.0	25.1	233.1
			80	19.3	23.8	225.2	20.7	26.5	241.2	18.4	22.0	214.4	24.4	34.1	284.1
		8	45	8.9	7.2	104.0	9.6	8.0	111.4	8.5	6.7	99.1	11.3	10.3	131.2
			50	11.2	10.1	130.0	12.0	11.3	139.3	10.6	9.4	123.8	14.1	14.6	164.1
			60	16.0	17.6	185.7	17.1	19.6	199.0	15.2	16.4	176.9	20.1	25.3	234.4
			70	20.5	26.1	239.0	22.0	29.0	256.1	19.6	24.2	227.6	25.9	37.4	301.6
			80	25.0	35.5	291.4	26.8	39.5	312.2	23.8	32.9	277.5	31.6	50.9	367.7
KD(X) -15	15000	4	45	5.9	3.4	68.3	6.3	3.8	73.2	5.6	3.2	65.0	7.4	4.9	86.2
			50	7.3	4.8	85.4	7.9	5.4	91.5	7.0	4.5	81.3	9.3	6.9	107.7
			60	10.5	8.4	121.9	11.2	9.4	130.7	10.0	7.8	116.1	13.2	12.1	153.9
			70	13.5	12.4	156.9	14.4	13.8	168.1	12.8	11.5	149.5	17.0	17.8	198.0
			80	16.4	16.9	191.3	17.6	18.8	205.0	15.7	15.7	182.2	20.7	24.2	241.4
		6	45	7.7	5.2	89.3	8.2	5.8	95.7	7.3	4.8	85.0	9.7	7.4	112.7
			50	9.6	7.3	111.6	10.3	8.2	119.6	9.1	6.8	106.3	12.1	10.5	140.9
			60	13.7	12.7	159.5	14.7	14.2	170.9	13.0	11.8	151.9	17.3	18.3	201.2
			70	17.6	18.8	205.2	18.9	21.0	219.9	16.8	17.5	195.5	22.3	27.0	259.0
			80	21.5	25.6	250.2	23.0	28.5	268.0	20.5	23.8	238.3	27.1	36.8	315.7
		8	45	9.9	7.7	115.6	10.6	8.6	123.8	9.5	7.2	110.1	12.5	11.1	145.8
			50	12.4	10.9	144.5	13.3	12.2	154.8	11.8	10.1	137.6	15.7	15.7	182.3
			60	17.7	19.0	206.4	19.0	21.2	221.1	16.9	17.6	196.5	22.4	27.3	260.4
			70	22.8	28.1	265.6	24.4	31.3	284.6	21.7	26.1	252.9	28.8	40.3	335.1
			80	27.8	38.2	323.7	29.8	42.5	346.9	26.5	35.4	308.3	35.1	54.8	408.5

注：进水温度60℃，进出水温差10℃。

Note: The water feed temp is 60℃, the temp difference between feeding and leaving is 10℃.

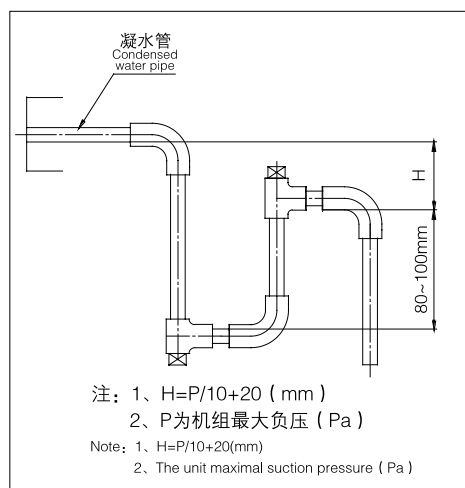
机组内部阻值表

Internal resistance table of air handling units

型号 Model	风量 m³/h Air flow	阻力 Pa Resistance Pa				
		箱体 House	表冷器 Surface cooler			过滤网 Filters
			4排 Rows	6排 Rows	8排 Rows	
KD(X)-1.5	1500	18	94	145	195	25
KD(X)-2	2000	20	96	155	200	25
KD(X)-2.5	2500	22	94	153	202	23
KD(X)-3	3000	25	98	155	196	22
KD(X)-4	4000	30	96	146	192	22
KD(X)-5	5000	31	101	150	198	23
KD(X)-6	6000	31	93	155	196	22
KD(X)-7	7000	35	91	146	185	25
KD(X)-8	8000	36	95	152	201	26
KD(X)-10	10000	50	110	160	198	28
KD(X)-12	12000	45	108	150	211	26
KD(X)-13.5	13500	55	120	168	205	30
KD(X)-15	15000	50	116	160	210	28

机组的安装

Mounting of the unit



- ◆ 吊顶式空调机组应水平安装于吊顶夹层内，冷凝水管侧允许偏低千分之五，但不允许偏高，以保证冷凝水的顺利排放。机组四周应留有充分的安装与维修空间。
- ◆ 与机组连接的冷凝水排放须设有水封，且水封要有足够的高度。
- ◆ 表冷器接水管为下进上出，在进水口处应加装截止阀、过滤器。
- ◆ 与机组连接的分管需柔性连接，与机组连接的水管应采用挠性接管，接管时扭力不应过大，以免损伤换热器。且管路须有单独支架，重量不得由机组承受。
- ◆ 机组供电电源为380v、50Hz。电源符合要求方可与电机相联，接通电源后，应检查风机转向是否正确，如反转，应停机将电源相序改变。
- ◆ 风机电机应有良好的接地，另须有过载、过热、缺相等其他可靠保护。



组合式空调机组
Combination air-handling units



吊顶式空调机组KD(X)系列
KD(X) series of ceiling air-handling units



KDS(X) 系列吊顶射流空调机组
KDS(X) Series Of Suspended Ceiling Jet Type Air Handling Unit



风机盘管机组
Fan-coils

◆The suspended ceiling air handling unit shall be mounted horizontally inside the ceiling interlayer. The side of condensed water pipe lower as much as 5‰ than the another one is allowed, but mustn't higher to ensure the condensed water drains smoothly. The unit is to be installed at its place of destination in an accessible way to the side connection and maintenance.

◆A water seal shall be fixed at condensed water drainage position that connects with the unit, and ensure its height is high enough.

◆The water enters into the cooler at the bottom, leaves at top. Stop valve and filters shall be added at water inlet.

◆The connection between unit and air ducts/ water pipes shall be flexible. When connecting the water pipes, your torsion force mustn't be too strong in case damages the heat exchanger. The pipeline shall be supported by its own supporting frames, and mustn't be born by the unit.

◆The electric source shall be 380V, 50Hz. Only meeting this requirement, can turn on the fan. After turning on, check the fan steering, if wrong, shall stop it and change the electric source phase orders.

◆The fan shall connect with the earth properly and have reliable protections like over-load, over-heat, phase-lack and others.

机组的运行及维护

The unit running and maintenance

◆机组的冷热媒应为洁净的软化水PH值为6.8~8（参照GB50050-2007），其工作压力不应超过1.6Mpa。

◆机组正常运行时风机轴承温升不应超过40℃。

◆机组出水管装有排气阀，首次运行及冷热转换前须打开排气阀，排净换热器及管路内的空气，以免影响换热效果。机组夏季供冷水温度不低于5℃，冬季供热水温度应不高于80℃。

◆冬季严寒地区及全新风机组开机制热时，应先开加热器5~10min，再启动送风机，防止大量冷空气在换热器内形成冰塞；停机时应先关闭新风阀，后关闭加热器，最后关闭送风机。

◆机组风机停止运行时，水阀应立即关闭。

◆机组在冬季长期不用时，应将盘管内存水排空，并用压缩空气吹干，如存水不能吹干净，应在管内加防冻液。如机组在冬季短时间暂时不运行，应保证管内有热水循环，以防锈、防冻。除冬季外，换热器在其他季节停用时，也应将换热器充满水，以减少锈蚀。

◆过滤器应定期清洗，以保证机组使用效果，如发现风量减小，一般为过滤器积尘过多所致。

◆机组运行一个月后，应检查吊装紧固件和风机紧固螺栓有无松动现象。

◆机组运行二至三年后，应进行全面保养，清除换热器管内水垢，用压缩空气或水清洗换热器翅片。如选用皮带传动风机，风机、电机等润滑部位应定期加注润滑油。

◆The unit cooling/heating media shall be softened water of PH value 6.8-8 (refer to GB50050-2007). Its running pressure shall not be higher than 1.6M pa.

◆The elevated temp of fan bearing shall not be more than 40℃ when normal running.

◆Air escape valve shall be fixed at water leaving pipeline. Turn on it when first running or before cooling heating shift, and drain out all the air inside the heat exchanger and pipeline in case reducing the heat exchanging effect. The water temp shall not be less than 5℃ when cooling in summer, not more than 80℃ when heating in winter.

◆When running at cold region in winter or all fresh air unit beginning to heating, shall turn on the heater ahead of 5-10min, then start the air supply fan in case large volume of cold air generate ice-block inside the heat exchanger. When stopping the unit, first close the fresh air damper, then close the heater, finally turn off the air supply fan.

◆Upon the fan stopping, shall close the water valve.

◆If the unit having a rest for a long time in winter, shall drain out all the water inside the coil, and dry it by compressed air. If not drain out the water completely, shall add anti-freeze liquid into the pipeline. If rest for a short time in winter, shall ensure hot water circulates in the pipeline in case rust and freezing. If rest in other seasons, not in winter, shall charge water inside the heat exchanger fully for rustproof.

◆Clean the filters regularly to ensure the unit running efficiency. If the air flow getting lower, must be caused by the dust collection of the filters.

◆After running for a month, shall check fasteners of hanging and fan connecting are loosen or not.

After running for 2 or 3 years, the unit shall be maintained completely. We should remove all the scales inside the heat exchanger, clean the heat exchanger fins by compressed air or water. If the belt transmission method is adopted, lubricant oil should be put onto the lubricant part of fan and motor.



BUILD REPUTATION ON PROJECTS

只要努力满足客户的需求

继续引入更多的优质产品

我们一定能够培育出一个稳定的顾客群体

实现销售网络持续、稳定的增长

If we strive to meet the demands of the clients

continue to produce more products with high quality

We will nourish and set up a steadfast client group

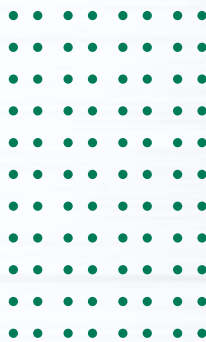
to realise the stable and steadfast expansion of the sales net

优良的品质和周到的服务，亚太集团取得了骄人的业绩。亚太洁净技术工程接连获得了北京小汤山医院、武汉火神山医院、武汉雷神山医院等近百家医院的青睐，以其洁净技术的杰出性能和净化实力，获得市场信任，树立用户口碑。

With excellent quality and considerate service, Yatai Group has made remarkable achievements. Its purification technology projects are successively favored by Xiaotangshan hospital in Beijing, Huoshenshan hospital and Leishenshan hospital in Wuhan. The outstanding performance of clean technology and purification strength have gained market trust for Yatai Group and established its reputation among users.



样本名称：吊顶式空调机组KD(X)系列 样本序号：SDYT-YB-B2-1 印刷时间：2021年11月(1000) 开本：1194×889竖16开



www.yatai.cc



地址：德州市大学东路
电话：(0534) 2551888 传真：(0534) 2551887
电子信箱：yatai@yatai.cc
Add: East of University Road, Dezhou City
Tel: (0534) 2551888 Fax: (0534) 2551887
Http://www.yatai.cc E-mail: yatai@yatai.cc

亚太集团各办事处联系方式：How to contact the branches of Yatai Group:

北京办事处 电话：(010)51908328 传真：(010)51908329 Beijing Office Tel: (010)50918328 Fax: (010)50918329	天津办事处 电话：(022)28350313 传真：(022)28350323 Tianjin Office Tel: (022)28350313 Fax: (022)28350323	山西办事处 电话：(0351)3377255 传真：(0351)3377256 Shanxi Office Tel: (0351)3377255 Fax: (0351)3377256	陕西办事处 电话：(029)87998107 传真：(029)87998105 Shanxi Office Tel: (029)87998107 Fax: (029)87998105	内蒙古办事处 电话：(0471)6914102 传真：(0471)6914103 Neimenggu Office Tel: (0471)6914102 Fax: (0471)6914103	河南办事处 电话：(0371)66205099 传真：(0371)66205228 Henan office Tel: (0371)66205099 Fax: (0371)66205228	辽宁办事处 电话：(024)31963712 传真：(024)31963711 Liaoning Office Tel: (024)31963712 Fax: (024)31963711
青岛办事处 电话：(0532)55669351 传真：(0532)55669350 Qingdao Office Tel: (0532)55669351 Fax: (0532)55669350	安徽办事处 电话：(0551)64274878 传真：(0551)64274868 Anhui Office Tel: (0551)64274878 Fax: (0551)64274868	四川办事处 电话：(028)83317691 传真：(028)83317692 Sichuan Office Tel: (028)83317691 Fax: (028)83317692	甘肃办事处 电话：(0931)8426317 传真：(0931)8426357 Gansu Office Tel: (0931)8426317 Fax: (0931)8426357	吉林办事处 电话：(0431)81232178 传真：(0431)81232178 Jilin Office Tel: (0431)81232178 Fax: (0431)81232178	徐州办事处 电话：(0516)83061415 传真：(0516)83061462 Xuzhou office Tel: (0516)83061415 Fax: (0516)83061462	黑龙江办事处 电话：(0451)51757348 传真：(0451)51754348 Heilongjiang office Tel: (0451)51757348 Fax: (0451)51754348
宁夏办事处 电话：(0951)7659633 传真：(0951)7659633 Ningxia Office Tel: (0951)7659633 Fax: (0951)7659633	新疆办事处 电话：(0991)6634488 传真：(0991)6628805 Xinjiang Office Tel: (0991)6634488 Fax: (0991)6628805	雄安新区办事处 电话：(0312)5621156 传真：(0312)5621157 Xiongan New Area Office Tel: (0312)5621156 Fax: (0312)5621157	湖北办事处 电话：(027)84638881 传真：(027)84638882 Hubei Office Tel: (027)84638881 Fax: (027)84638882			